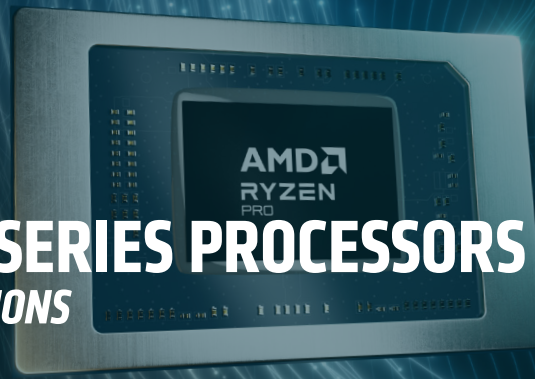


AMD RYZEN™ PRO 7040 U-SERIES PROCESSORS

FOR THIN AND LIGHT MOBILE WORKSTATIONS

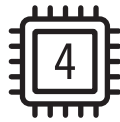


The world's most advanced X86 processors¹, with a **new revolutionary AI engine** on select models providing premium AI collaboration experiences along with the **integrated Radeon™ PRO Graphics driver** and up to **eight high-performance cores** to tackle demanding professional workflows from rendering to software development on-the-go.



ZEN 4

World's Fastest and Most Advanced x86 Pro Processor¹



4nm

Amazing power efficiency for business laptop processor



AMD RDNA3™

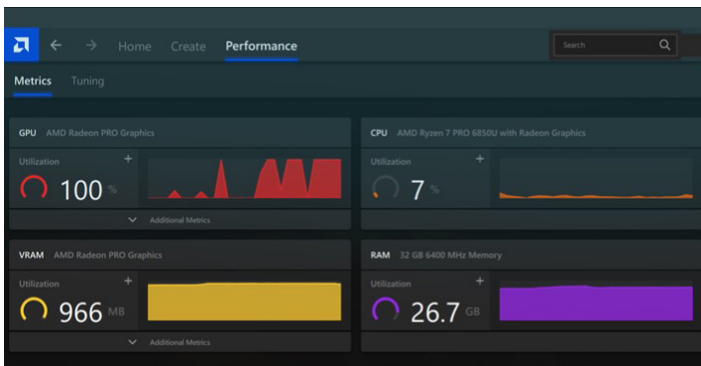
Powerful integrated graphics



AMD Ryzen™ AI

World's first integrated AI engine in an x86 processor²

PROFESSIONAL GRAPHICS



AMD Radeon™ PRO Settings Interface

ISV Application Certifications for leading design tools like:

ANSYS® | Autodesk AutoCAD® | PTC Creo® | Bentley MicroStation®
Siemens NX | Autodesk Revit® | Siemens Solid Edge® | Dassault SOLIDWORKS®

AMD Ryzen™ PRO 7040 Series processors feature the integrated Radeon™ PRO Graphics driver, bringing benefits to users of professional content creation applications, including:

- Enterprise-Grade Quality and Reliability
- Optimizations for professional software applications

AMD RYZEN™ AI – FULLY INTEGRATED IN CPU FOR OPTIMAL EFFICIENCY



Eye Gaze Correction



Portrait Blur



Auto Framing

Integrated AI Engine provides AI experiences with incredible battery life, speed, and quiet operation



*Available on AMD Ryzen™ 7 PRO 7840U only

AMD PRO TECHNOLOGIES

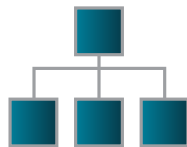
AMD PRO technologies, enabled on all PRO processors from AMD, help businesses and IT managers address challenges they face every day. From SECURITY features to MANAGEABILITY tools as well as providing STABILITY, RELIABILITY & FLEXIBILITY, AMD PRO technologies has got you covered.

AMD PRO SECURITY



Layers of built-in security features to help protect your sensitive data from today's sophisticated attacks.

AMD PRO MANAGEABILITY



For simplified deployment, imaging, and management that is compatible with your current infrastructure.

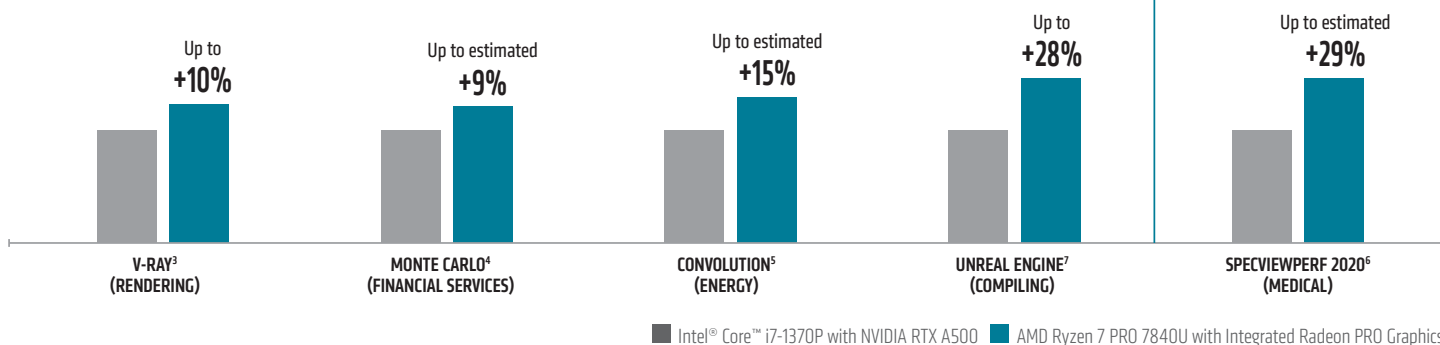
AMD PRO BUSINESS READY



18 months of planned software stability.
24 months of planned availability for peace of mind.

HOW IT PERFORMS

APPLICATION PERFORMANCE



MODEL SPECIFICATIONS

Model	Cores/Threads	Up to Boost ² / Base Frequency	Cache L2+L3	Graphics	Node	TDP	Integrated AI Engine
AMD Ryzen™ 7 PRO 7840U	8/16	5.1GHz/3.3GHz	24MB	AMD Radeon™ PRO Graphics	4nm	28W	✓
AMD Ryzen™ 5 PRO 7540U	6/12	4.9GHz/3.2GHz	22MB	AMD Radeon™ PRO Graphics	4nm	28W	✗

1. Based on a smaller node size of the AMD processor for an x86 platform, as of August 2022. GD-203
 2. As of May 2023, AMD has the first and only available dedicated AI engine on an x86 Windows processor, where "dedicated AI engine" is defined as an AI engine that has no function other than to process AI inference models and is part of the x86 processor die. Intel's newest 13th gen Windows-based x86 processors consist of Core i9, Core i7, Core i5, and Core i3 models listed here.
 3. PHXP-14: Based on AMD performance lab testing as of 26 May, 2023 using the Chaos V-RAY benchmark to compare the performance of an AMD Ryzen™ 7 PRO 7840U reference system with integrated Radeon PRO graphics, 32GB RAM, 1TB SSD, Windows 11 PRO vs a DELL Precision 3480 with an Intel® Core™ i7-1370P, NVIDIA RTX A500 graphics card, 32GB RAM, 1TB SSD, Windows 11 PRO. System manufacturers may vary configurations, yielding different results. PHXP-14
 4. PHXP-15: Based on AMD performance lab testing as of 26 May, 2023 using the SPECworkstation™ 3.1 Monte Carlo subtest to compare the performance of an AMD Ryzen™ 7 PRO 7840U reference system with integrated Radeon PRO graphics, 32GB RAM, 1TB SSD, Windows 11 PRO vs a DELL Precision 3480 with an Intel® Core™ i7-1370P, NVIDIA RTX A500 graphics card, 32GB RAM, 1TB SSD, Windows 11 PRO. System manufacturers may vary configurations, yielding different results. SPECworkstation™ is a registered trademark of the Standard Performance Evaluation Corporation. Additional information about the SPEC™ benchmarks can be found at www.speccp.org. PHXP-15
 5. PHXP-16: Based on AMD performance lab testing as of 26 May, 2023 using the SPECworkstation™ 3.1 Convolution subtest to compare the performance of an AMD Ryzen™ 7 PRO 7840U reference system with integrated Radeon PRO graphics, 32GB RAM, 1TB SSD, Windows 11 PRO vs a DELL Precision 3480 with an Intel® Core™ i7-1370P, NVIDIA RTX A500 graphics card, 32GB RAM, 1TB SSD, Windows 11 PRO. System manufacturers may vary configurations, yielding different results. SPECworkstation™ is a registered trademark of the Standard Performance Evaluation Corporation. Additional information about the SPEC™ benchmarks can be found at www.speccp.org. PHXP-16
 6. PHXP-17: Based on AMD performance lab testing as of 26 May, 2023 using the SPECviewperf™ 2020 v3.1 medical-03 subtest to compare the performance of an AMD Ryzen™ 7 PRO 7840U reference system with integrated Radeon PRO graphics, 32GB RAM, 1TB SSD, Windows 11 PRO vs a DELL Precision 3480 with an Intel® Core™ i7-1370P, NVIDIA RTX A500 graphics card, 32GB RAM, 1TB SSD, Windows 11 PRO. System manufacturers may vary configurations, yielding different results. SPECviewperf™ is a registered trademark of the Standard Performance Evaluation Corporation. Additional information about the SPEC™ benchmarks can be found at www.speccp.org. PHXP-17
 7. PHXP-39: Based on AMD performance lab testing as of 10 June, 2023 using the Unreal Engine 5.1 Compilation benchmark to compare the performance of an AMD Ryzen™ 7 PRO 7840U reference system with integrated Radeon PRO graphics, 32GB RAM, 1TB SSD, Windows 11 PRO vs a DELL Precision 3480 with an Intel® Core™ i7-1370P, NVIDIA RTX A500 graphics card, 32GB RAM, 1TB SSD, Windows 11 PRO. Results may vary. PHXP-39
 8. Max boost for AMD Ryzen processors is the maximum frequency achievable by a single core on the processor running a bursty single-threaded workload. Max boost will vary based on several factors, including, but not limited to: thermal paste; system cooling; motherboard design and BIOS; the latest AMD chipset driver; and the latest OS updates. GD-150

Zen 4 is a codename only and not an AMD product name. ©2023 Advanced Micro Devices, Inc. All rights reserved. AMD, the AMD Arrow logo, and combinations thereof are trademarks of Advanced Micro Devices, Inc. Other names are for informational purposes only and may be trademarks of their respective owners. June 2023. PID#232176901